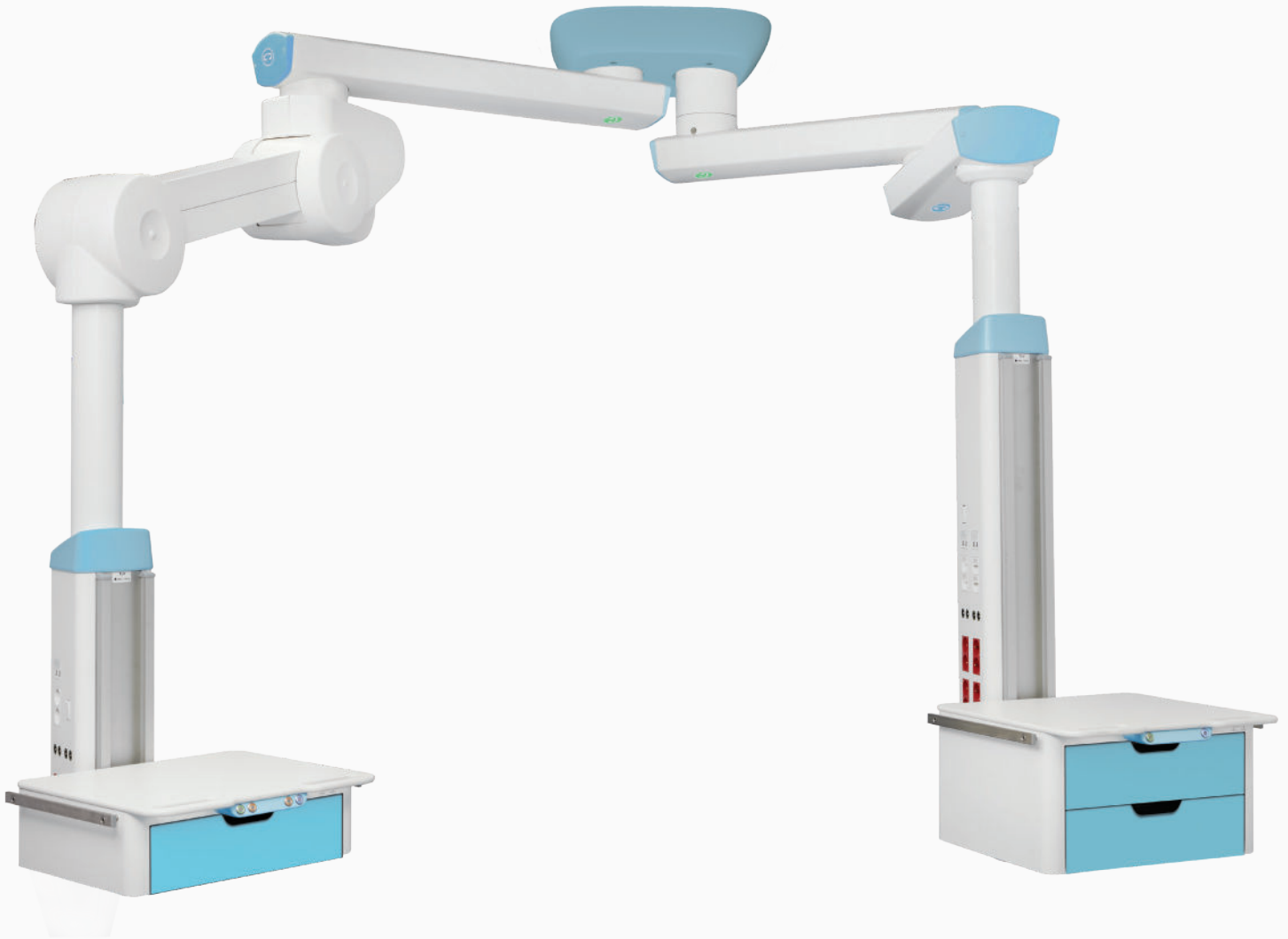


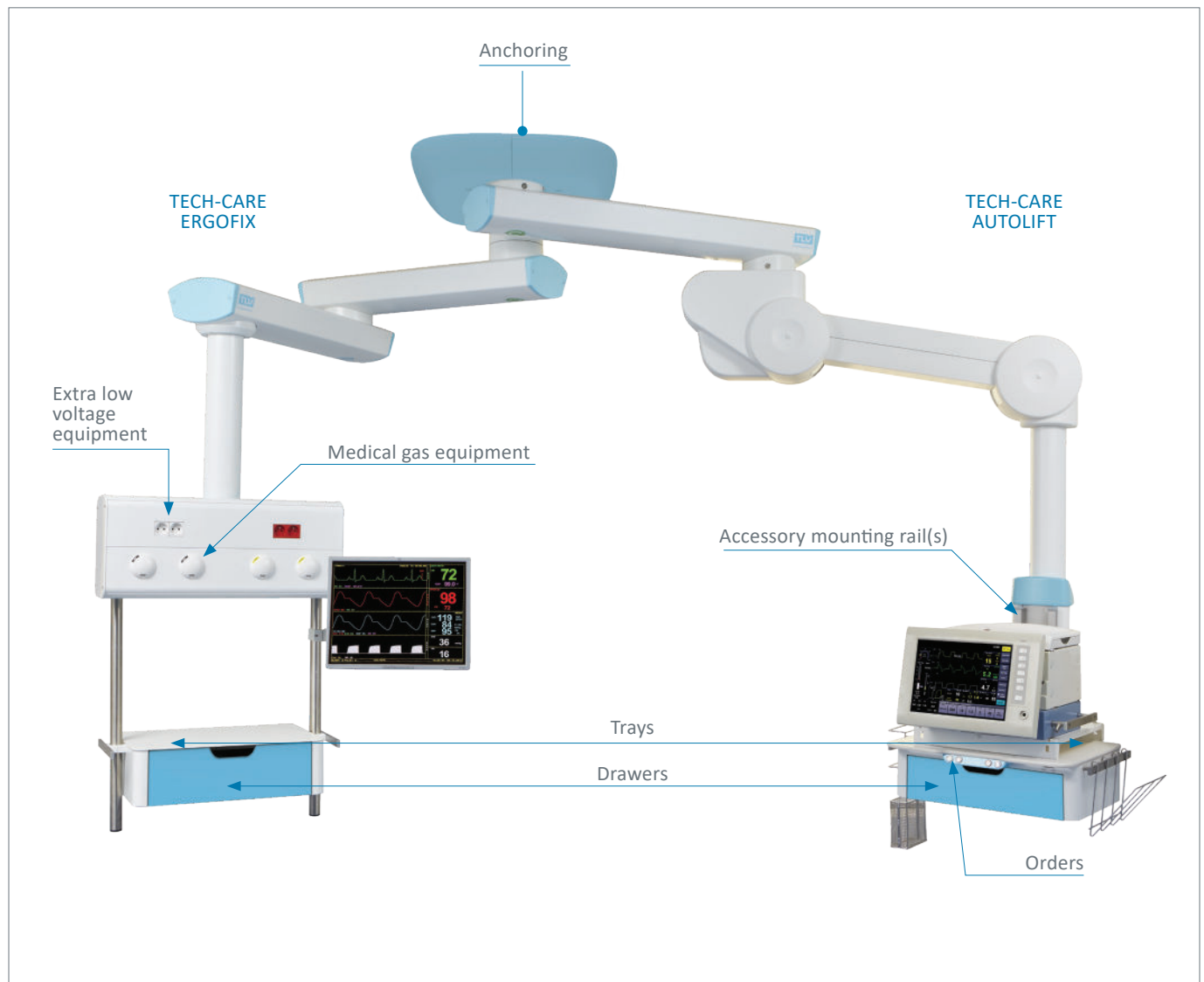
TECH-CARE (AUTOLIFT AND ERGOFIX)



FUNCTIONALITY

The ceiling-mounted pendant from the TECH-CARE range (Autolift and Ergofix) satisfy most requirements of healthcare professionals and provide convenience and safety when lifting and transporting biomedical devices and accessories (such as endoscopy trolley, respirator, and anesthesia machine). The motorized version of the Autolift arm lets you lift equipment quickly and effortlessly.

Their custom technical and ergonomic configuration provides modularity and a radius of movement from 45° to 315°. The flexibility of the arms optimizes patient access, working conditions, and cleaning of treatment areas.



New : The TECH-CARE pendant is available with electromagnetic braking system

The TECH-CARE pendant allows horizontal travel of 500 to 2000 mm according to configuration. Its motorized version provides 680 mm vertical travel. Its standard version is equipped with a mechanical friction rotation braking system, and an optional electropneumatic or electromagnetic braking system is available.

The new boxes are designed to be ergonomic and user-friendly for all care teams. They distribute extra-low/low voltage and medical gases.

Technical characteristics of boxes

Vertical

- Aluminum profile
- High loading capacity: 150 kg
- Three heights for vertical box: 600, 1200 or 1500 mm
- Equipped with three accessory mounting rails, 25 x 10 mm (two on the front panel and one on the back)
- Can be equipped with optional LED position lighting located at the bottom



Horizontal

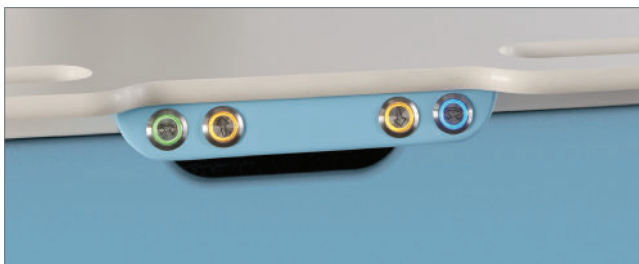
- RAL 9016 white lacquered steel body
- Loading capacity 150 kg
- L x H x P (without rail): 760 mm x 324 mm x 267 mm
- Equipped with two vertical Ø 38 mm accessory support tubes, 800 or 1500 mm long
- Located on the side, the manipulator allows up/down system and rotation



Controls with illuminated button

They are located on the front panel of the tray, allowing easy and ergonomic use of the motorized arm braking and up/down system.

With their color coding, they allow intuitive operation of the arm.



Controls and handles



Control with tray



Offset handle for light loads



Heavy duty handle

Integration of gases

The distribution boxes incorporate every type of gas outlet standard (DIN, BS, AFNOR).



Trays & Drawers

The trays are designed to comply with the strictest standards concerning hygiene and durability. Their surface is compact with white core (HPL), and they have lateral accessory mounting rails (25 x 10 mm).

The tray units can accommodate one or two drawers. The ergonomic handles built into the trays make it easy to handle the arm. The drawers are removable for easy cleaning.



Integration of electrical equipment

The TECH-CARE cover is cut by water jet, providing a precise, tailor-made finish so that sockets of any shape can be built into it. Electrical devices are flush-mounted, for easy cleaning and disinfection of the product.



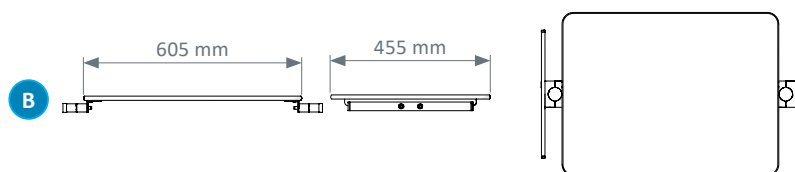
Extra tube system to hold accessories

This device clamps onto the vertical service head and makes it possible to hang main biomedical accessories.



Trays and drawers for horizontal box

Trays



One drawer

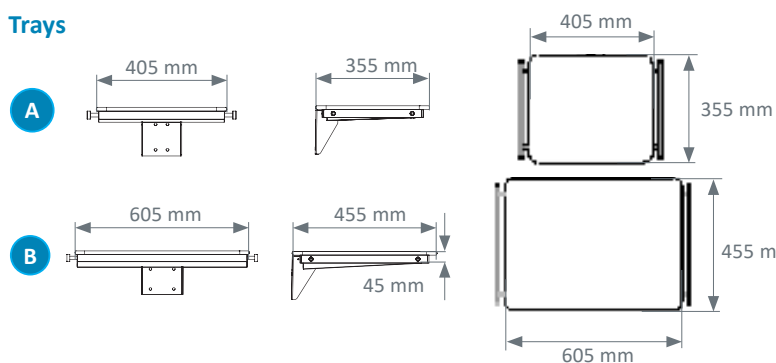


Two drawers



Trays and drawers for vertical box

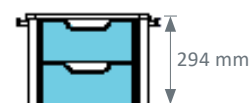
Trays



One drawer



Two drawers



Load table

	TRAY DIMENSION	LOAD MAX
A	405 x 355 mm	40 kg
B	605 x 455 mm	60 kg

Optional features

Night lighting, located at the bottom



Jar mounting rail



360° DALI column low flow light



High flow DALI circulation light



MONO CONFIGURATIONS

Mono configuration, single arm, vertical box



Mono configuration, double arm, vertical box



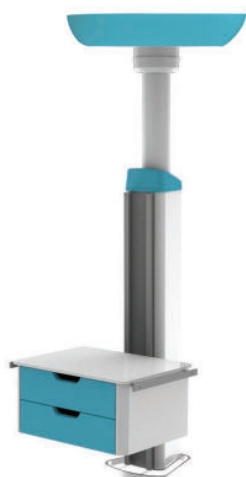
Mono configuration, single motorized arm, vertical box



Mono configuration, double motorized arm, vertical box



Vertical column configuration



DUO CONFIGURATIONS

Duo configuration, single arm with vertical box, single motorized arm with vertical box



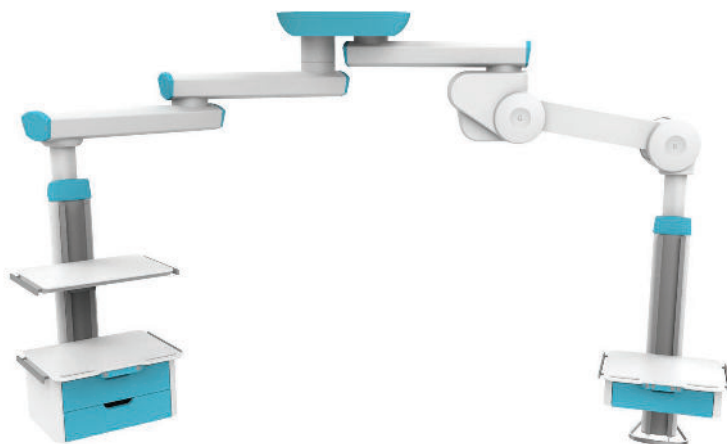
Duo configuration, double arm with vertical box, vertical column



Duo configuration, single arm: vertical box, horizontal box



Duo configuration, double arm with vertical box, double motorized arm with vertical box



Duo configuration, double arm: vertical box, horizontal box



TECHNICAL CHARACTERISTICS

Ceiling mounted	Anchoring distance ceiling / false ceiling up to 1500 mm			
Configuration	Mono or Duo			
Arm lengths	500 mm, 750 mm and 1000 mm			
Loading capacity	Single arm	Motorized tilt mechanism	ø 120 mm column	Distribution box*
	500 mm	No	300 kg	150 kg
	750 mm	No	300 kg	150 kg
	1000 mm	No	300 kg	150 kg
	1000 mm	Yes	180 kg	150 kg
	Double arm			
	500 + 500 mm	No	300 kg	150 kg
	750 + 500 mm	No	300 kg	150 kg
	1000 + 500 mm	No	280 kg	150 kg
	750 + 750 mm	No	280 kg	150 kg
	1000 + 750 mm	No	250 kg	150 kg
	1000 + 1000 mm	No	250 kg	150 kg
	500 + 1000 mm	Yes	180 kg	150 kg
	750 + 1000 mm	Yes	180 kg	150 kg
	1000 + 1000 mm	Yes	180 kg	150 kg
Height of vertical box	600 mm, 1200 mm and 1500 mm			
Dimensions of horizontal box	760 mm x 324 mm x 267 mm			
Rotations	Arm: 45 to 315°, stop indexing every 25,5° Box: 30 to 330°			
Rotation braking	Arm: adjustable mechanical (standard) or electromagnetic (optional) Box: adjustable mechanical			
Amplitude of tilting arm	580 mm max			
Colors	White RAL 9016			

* The carrying capacity is the maximum acceptable load on the distribution box. This value should be reduced by the weight of the trays and accessories supported by the box. Therefore TLV mentions the acceptable weight by visible label on each box, rail and tray, avoiding the risk of overload.



Norms & certifications

- EN ISO 13485 : Quality management systems
- CE Medical Devices Marking according to the (EU) Rules 2017/745
- EN ISO 11197: Medical supply units
- EN ISO 7396: Medical gas pipeline systems - Part 1 and 2
- EN 60601-1: Medical electrical equipment - Part 1

Bed head units, Wall lighting units, Ceiling pendants, Suspended Beams & Columns,
Special care bed head units, Sealed lightings, Medical gas monitoring & Biomedical Accessories

